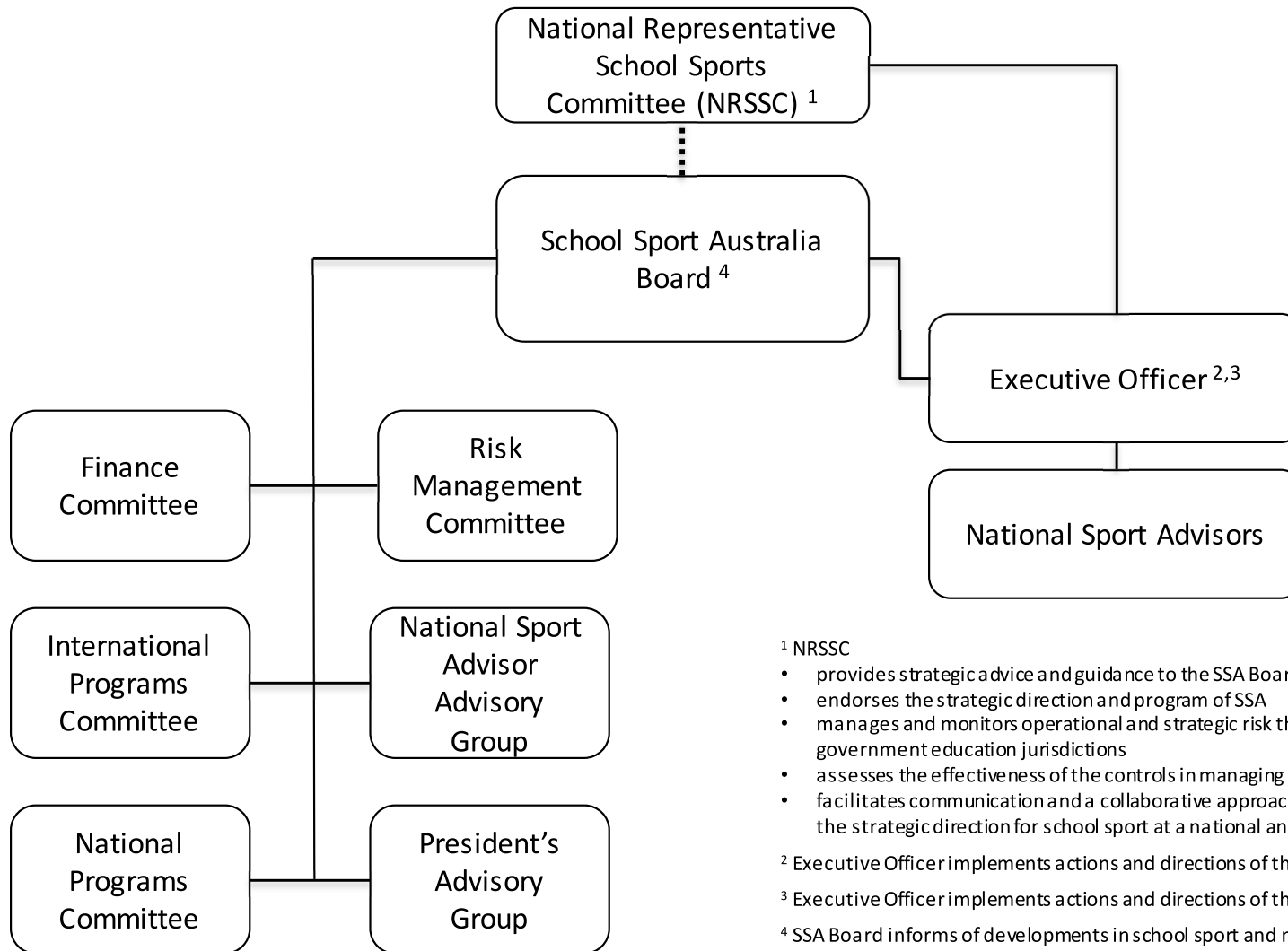


# Governance Model



## MEMBER BODIES:

- Australian Capital Territory
- New South Wales
- Northern Territory
- Queensland
- South Australia
- Tasmania
- Victoria
- Western Australia

(SSA Board – Membership Representation)

(SSA Committees and Advisory Groups – Membership Consultation)

### <sup>1</sup> NRSSC

- provides strategic advice and guidance to the SSA Board
- endorses the strategic direction and program of SSA
- manages and monitors operational and strategic risk that may impact on state/territory government education jurisdictions
- assesses the effectiveness of the controls in managing identified risks
- facilitates communication and a collaborative approach to the ongoing development of the strategic direction for school sport at a national and international level

<sup>2</sup> Executive Officer implements actions and directions of the NRSSC

<sup>3</sup> Executive Officer implements actions and directions of the Board

<sup>4</sup> SSA Board informs of developments in school sport and making recommendations regarding policy and new initiatives